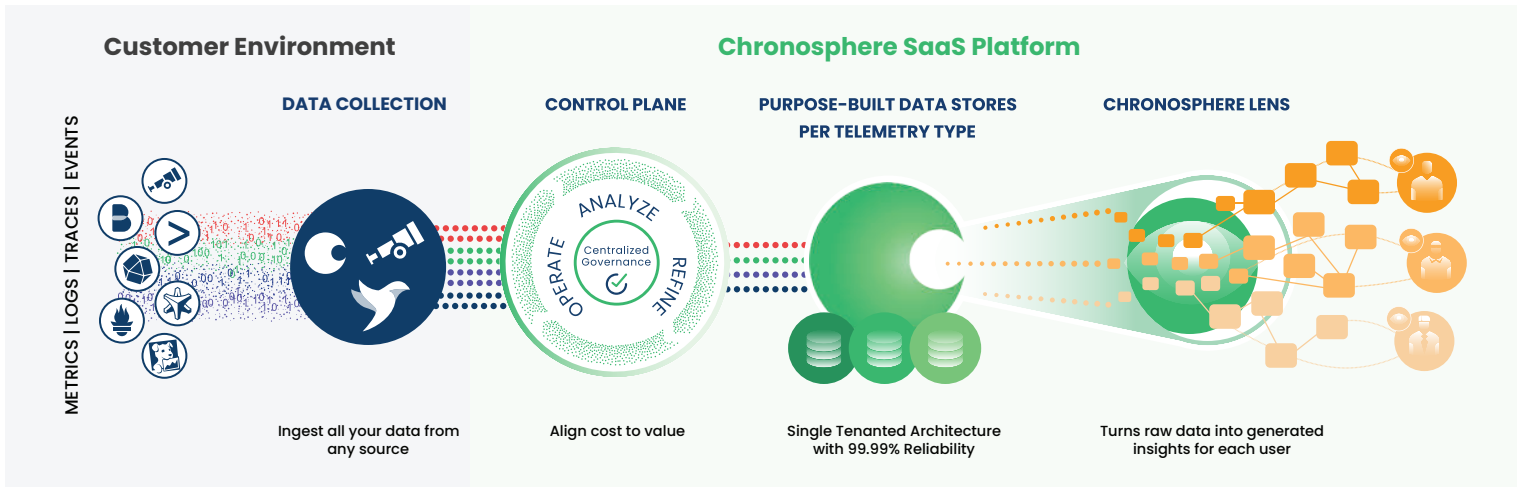


Chronosphere Control Plane

Efficiently manage observability data based on need, context, and utility to optimize the value it delivers while controlling costs.



The Control Plane is a unique set of features within Chronosphere that enables observability data optimization — a requirement to align observability data value with its cost. It allows observability teams to maintain centralized control and the ability to delegate responsibility to service teams to control their own data growth, when appropriate. The Control Plane gives everyone the tools to analyze the data they are responsible for, in order to understand what is useful and what is waste, and the ability to refine that data to improve its usefulness and reduce cost. It also ensures the data is continuously optimized so dashboards, alerts, and queries are fast and deliver the information developers and engineers need to do their jobs.

Key Benefits



Centralized Governance – Allocate priorities and drive accountability to control data growth and make it more predictable. Observability teams can assign **Quotas** by team or service when appropriate while maintaining centralized control.



Analyze – Inspect incoming observability data in real-time. Understand how the data is being used, where it is being used, and who is using it.



Refine – Fulfill your existing observability needs without having to store all the data in the raw form. Shape and transform your data based on need, context, and utility to reduce costs and improve performance.



Operate – Continuously optimize for efficiency. Easily identify shaping policies that have become inefficient and take steps to optimize them. Preview the impact of shaping decisions before they are implemented.



DOORDASH

"Chronosphere's game-changing platform gives us the visibility and control to manage our observability data, especially with our unprecedented growth."

Ryan Sokol

VP of Engineering
at DoorDash

Key Capabilities

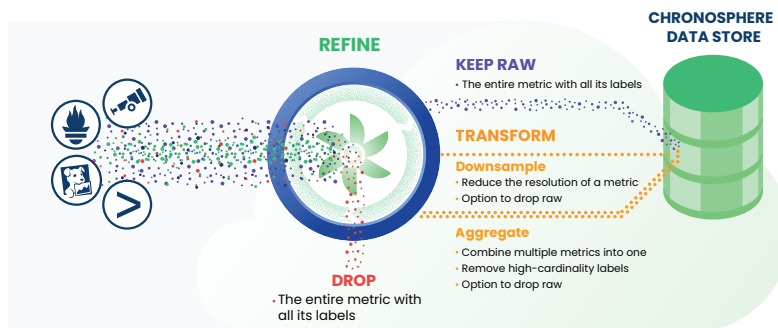
Metrics Control

Centralized Governance - Assign metrics Quotas by team or service to delegate control to the teams that know the data best.

Analyze - Provides real-time insights to metric data. Understand data usage and value. Quickly troubleshoot high cardinality metrics.

Refine - Shape and transform your metric data. Drop, aggregate, and/or downsample data in real-time, in a streaming fashion- no need to redeploy the application.

Operate - Continuously optimize for efficiency. Know when shaping policies become inefficient and need to be optimized.

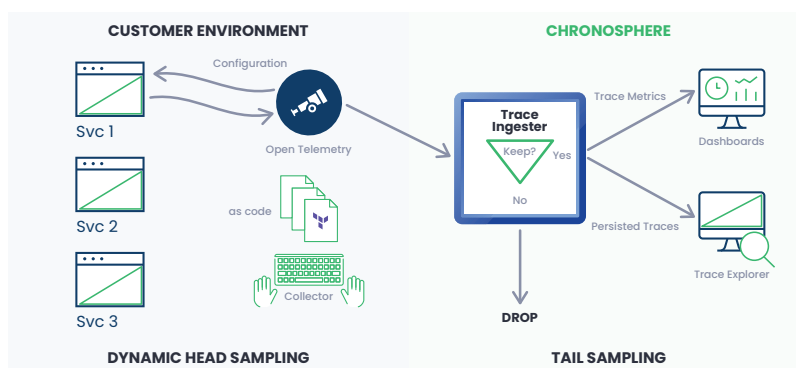


Trace Control

Analyze - Provide real-time view of incoming traces grouped by tags and relative frequency to understand how often your applications emit traces and troubleshoot spikes in ingest rates.

Dynamic Head Sampling - Change sampling rates without having to redeploy your service or OTel Collector. Increase collection during an incident and turn it back down when no longer needed. Can be adjusted every 15 seconds.

Tail Sampling - Combined with Dynamic Head Sampling allows you to derive the most value from your trace data while controlling costs.

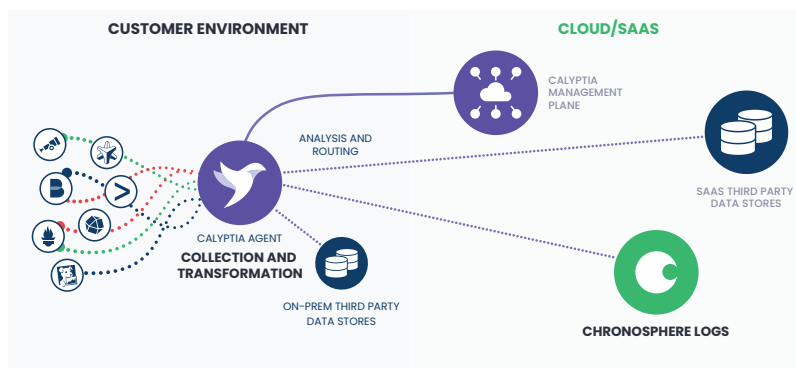


Logs Control

Analyze log data in real-time - Give engineers a head start on finding the data they need, instead of waiting 30+ minutes to access logs from an incident while they are indexed and stored.

Transform at the edge to save bandwidth - The lightweight collection agent works well at edge and provides 20 OOTB transformations - this includes tagging and other augmentations.

Centralized management - Manage agents, configurations, and pipelines at scale.



About Chronosphere

Chronosphere is the only cloud native observability platform that puts engineering organizations back in control by taming rampant data growth and cloud native complexity while accelerating innovation. Faster alerts and issue resolution ensures responsive and reliable cloud native workloads underlying the most valuable services at leading organizations like DoorDash, Robinhood, and Abnormal Security. Teams at organizations of all sizes trust Chronosphere to help them drive competitive advantage and world-class customer experiences while reducing engineering burnout and eliminating lock-in.