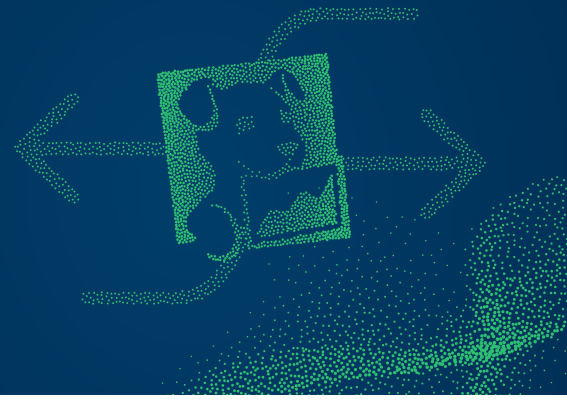


# 3 Reasons Why Migrating Off of Datadog is Worth It



Migrating from one observability platform to another can be a daunting task. When thinking about making a switch, there are a number of things to consider. How much work will be involved? How much will it cost? How long will it take? But there are also some key reasons that you should migrate if your current observability platform is falling down on the job. Can I save money? Can I solve problems faster?

Datadog is one of the most popular observability platforms in the market today, but many organizations are finding that it is no longer able to meet their needs.

Let's take a look at 3 reasons why migrating off Datadog is worth it.

1



## Migrating to a Datadog alternative means taking control of your observability data

Datadog ingests observability data from various sources but lacks control over the data once ingested. With Datadog, users cannot transform, prune, or redact data, nor can they assess its value – these shortcomings lead to increased costs based on the volume of data ingested.

A Datadog migration to Chronosphere allows you to control and manage your observability data because Chronosphere offers built-in visibility and control over your observability data through its Control Plane technology. This allows you to evaluate the usefulness of incoming data and decide how much to keep. Chronosphere shows which data is used in dashboards and alerts, enabling you to drop, sample, redact, or transform metrics, traces, or logs at ingestion time. **This control helps manage the flood of observability data in today's high-cardinality environments. Without migrating to Chronosphere, you won't have this control.**

2



## A Datadog migration means taking control of your observability costs

Recently, Datadog has been called out for sending high bills to its clients due to its pricing model, which is based on the amount of data ingested and stored. These bills are high because modern applications – often built with containers, Kubernetes, and cloud services – generate a massive volume of observability data to be stored, leading to skyrocketing costs.

Chronosphere charges only for the data you use. Its capability to identify valuable data can reduce stored data volume by up to 60%, significantly lowering costs while maintaining necessary visibility and insights to keep systems running smoothly. **The sooner you start your Datadog migration to Chronosphere, the sooner the cost cutting starts.**



## Migrate from Datadog to Take Control of Your Downtime and Troubleshooting

So much data! How do I find where my problem is? Datadog stores vast amounts of observability data, which can be overwhelming when troubleshooting issues. This can negatively impact Mean Time to Repair (MTTR) and lead to extended downtime.

On the other hand, if you migrate to Chronosphere, you can use Chronosphere's Control Plane technology which allows you to focus on only the valuable data. In addition, Chronosphere's Lens technology provides targeted insights across different telemetry types (metrics, events, logs, traces), offering context that allows you to quickly identify anomalies and root causes. **This means faster problem-solving, reduced MTTR, and minimized downtime, but only after you migrate.**

## Benefits of Migrating to Chronosphere as a Datadog alternative

Datadog, designed for previous-generation applications and infrastructure, struggles with the volume of data from modern environments, leading to high costs and inefficiencies in solving performance issues. As a Datdog alternative, a platform like Chronosphere, designed for current environments, helps manage these challenges effectively.

### Chronosphere was built with three key considerations:



Modern application environments produce a vast amount of high-cardinality observability data



Not all observability data is valuable or needed



Situational awareness and context are crucial for quickly solving problems

Chronosphere customers often experience significant cost savings compared to other observability solutions, making the migration financially justifiable. Moreover, the ability to cut through high volumes of data with targeted insights for faster problem resolution is a critical benefit of migrating to Chronosphere.

Find out how Chronosphere and Datadog compare

Get Started