

Differential Diagnosis

Troubleshoot service issues faster with Differential Diagnosis (DDx)

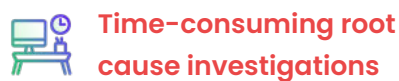
Chronosphere Differential Diagnosis (DDx) **accelerates troubleshooting** by automatically surfacing critical insights from trace data. This intuitive UI empowers developers to **quickly review, assess, and resolve**

Challenge: Troubleshooting in Microservices Environments

When troubleshooting in a complex microservices environment, forming and testing hypotheses is challenging. This is especially true for less experienced developers.



As systems grow more complex, developers are becoming more specialized, focusing on individual services. This makes troubleshooting harder because they don't understand the broader system interactions.



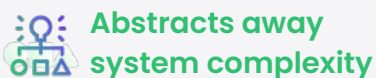
Troubleshooting performance issues often requires manually searching through traces, metrics, and logs. This is challenging, even for senior developers, and can take hours or days, delaying issue resolution.



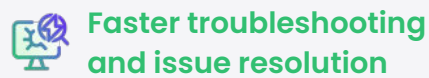
Most distributed tracing tools are complex, requiring specialized query languages. This causes frequent escalations and slows troubleshooting.

Solution: Empower All Developers with Differential Diagnosis

Differential Diagnosis (DDx) ensures that developers of all levels can identify and resolve performance issues without being bogged down by complexity, skill gaps, or time-consuming investigations.



DDx automatically analyzes all related spans and dimension. Developers can focus on resolving issues without needing to understand the entire system.



DDx quickly ranks and highlights the most likely causes of an issue, streamlining troubleshooting and accelerating root cause identification.



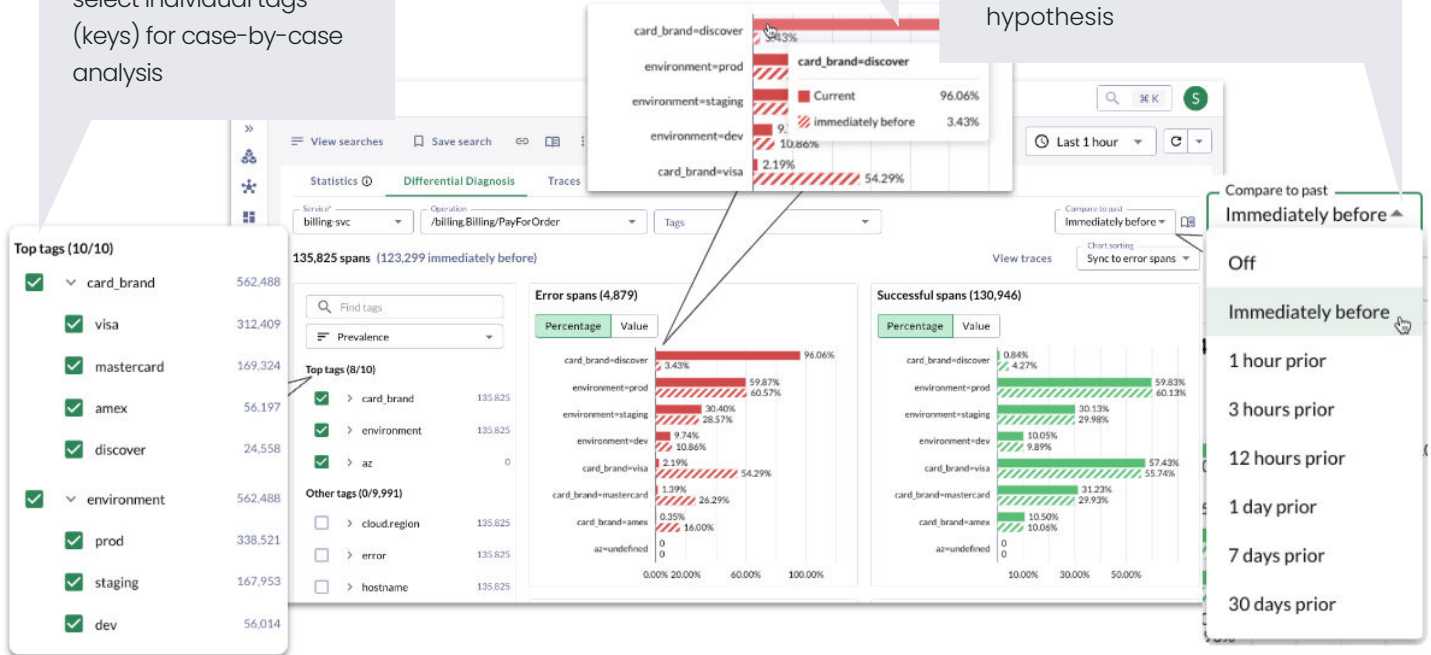
DDx is easy to use. Its intuitive UI empowers all developers to troubleshoot effectively, reducing reliance on senior engineers and boosting overall team productivity.

How it Works

Set up "Top Tags" for default DDx analysis or select individual tags (keys) for case-by-case analysis

DDx ranks and highlights most likely issue sources for faster problem identification

Easily compare current data to the last time things looked "good" to validate your hypothesis



Key Features: Simplify Troubleshooting with Differential Diagnosis

Automated insights from trace data

With a single click, DDx analyzes trace data to identify the most likely source of service slowdowns or failures, helping developers to zero in on problems faster.

One click analysis

When suspicious trends or patterns are discovered, DDx automatically compares dimensions (e.g., errors, latencies) and highlights differences, enabling developers to quickly spot issues.

Intuitive and Flexible UI

The user-friendly interface makes it simple for developers of any experience level to investigate problems, reducing the reliance on senior team members.

About Chronosphere

Chronosphere is the observability platform built for control in the modern, containerized world. Recognized as a leader by major analyst firms, Chronosphere empowers customers to focus on the data and insights that matter to reduce data complexity, optimize costs, and remediate issues faster.

"Differential Diagnosis is a great tool for identifying and resolving specific performance issues. Thanks to Chronosphere, we recently identified and resolved a deployment issue in just minutes."

- Carson Gee, Principal Software Engineer
DataRobot